

Bizcommunity, Recruitgroup launch BizCareers Column

Issued by Bizcommunity.com

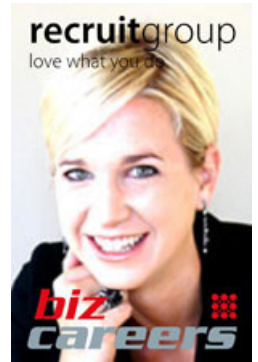
17 Jul 2013

This week, Bizcommunity.com is proud to announce the expansion of the value and scope of our [HR & Recruitment portal offering](#): in collaboration with [Juliette Attwell](#) of the Recruitgroup, we're launching a regular [BizCareers Column](#) that will offer sound recruitment advice for both job- and candidate-seekers.

From interviews and CV tips to the most desirable skills sought by employers, current salary expectations and more, Attwell will personally answer any recruitment-related queries and requests submitted by our readers

Barely containing her enthusiasm for the launch of her BizCareers Column, Attwell explains that, over the past few years, she often had to mentor both career seekers and prospective employers on what to expect in the job marketplace.

"The new BizCareers Column is intended to provide answers to the kinds of questions that we receive every day and to enable career-seekers in our region with the necessary information to make informed decisions," she says.



About Juliette Attwell

Attwell is currently head of marketing and operations at Recruitgroup, a Level Three BEE contributor which was awarded the Best Recruitment Agency of the Year at the CareerJunction Awards in 2010 and 2012, as well as other industry honours. She holds a BCom in Industrial Psychology and Honours in Marketing Management.

For more, go to the Recruitgroup's [Biz Press Office](#), follow [@therecruitgroup](#) on Twitter and start emailing your questions for publication on Bizcommunity to careerquestions@bizcommunity.com.

About recruitment on Bizcommunity

Currently weighing in at [±1,000 quality advertised jobs](#) a month across [26 industry categories](#), Bizcommunity's vibrant Recruiter section undoubtedly packs a lot of punch in the South African job market.

Please note:

- To see your questions answered in the BizCareers Column, please word your recruitment, job or career queries carefully, paying special attention to spelling and grammar.
- Answers and advice provided will be based on your questions/industry issues, so the more complete and the more accurate your questions, the better. Answers will only be provided through Bizcommunity.com and not as direct responses from Juliette Attwell.
- The answers provided to questions submitted by readers will be based on the content of questions themselves, current recruitment practices and current legislation in force at the time of writing, and are intended as advisory only and such advice is provided in good faith.
- Readers' questions are submitted on the basis that neither Juliette Attwell, Recruit Group, Bizcommunity.com, their management nor associates may be held liable in any manner whatsoever for any consequences that might result from the correspondence following the advice provided. Juliette Attwell, Recruit Group, Bizcommunity.com, their management or associates shall under no circumstances be held liable for any error in responses provided in this column as to the references of the candidate, relating to his or her qualifications, skills, personality and experience; as to the compliance with the various legal and medical requirements relating to the performance, by the candidate, of his or her work, or any consequence whatsoever connected to the use of false/incomplete information.

■ **Biz Most Read Award winners April 2024** 1 May 2024

■ **Tick all the X's with Biz Content Feature Sponsorship** 26 Apr 2024

■ **Biz Most Read Award winners March 2024** 2 Apr 2024

■ **Biz Most Read Award winners February 2024** 1 Mar 2024

■ **Share in the sharing economy on Biz** 28 Feb 2024

[Bizcommunity.com](https://www.bizcommunity.com)



Where 370 companies in 18 industries trust Biz Press Office newsrooms to publish corporate content, on Africa's indispensable B2B news media. **Enquire about a newsroom like this for your company on sales@bizcommunity.com**

[Profile](#) | [News](#) | [Contact](#) | [Twitter](#) | [Facebook](#) | [RSS Feed](#)

For more, visit: <https://www.bizcommunity.com>